

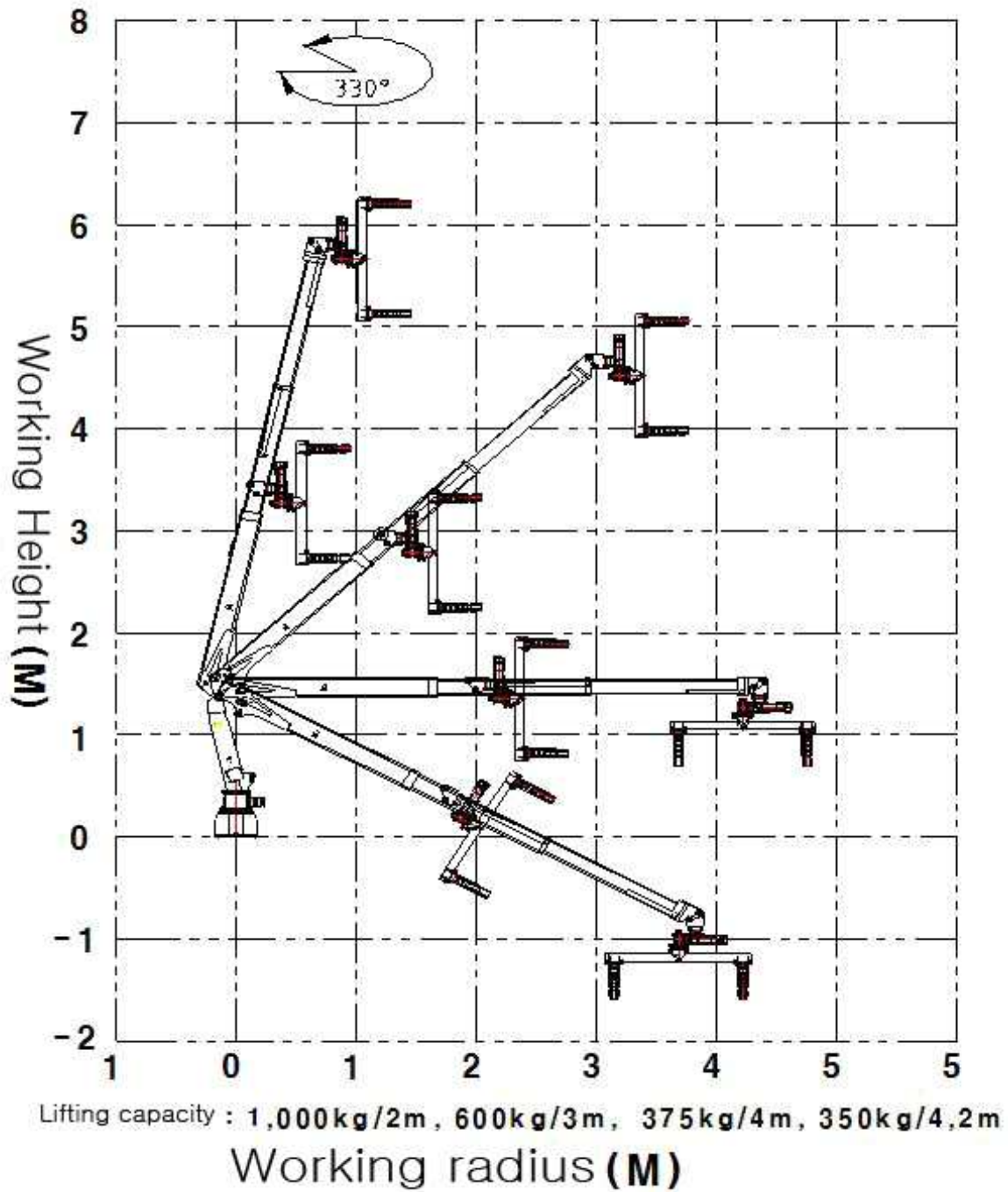
1. Specifications

Item	division
◎ Crane capacity	
Crane body size (LxWxH)mm	3006 x 370 x 1968
The maximum lift height	6.3 m
Load capacity (Load / working radius) Based on the horizontal work	1,000 kg/2.1m
	600 kg/3 m
	375 kg/4 m
	350 kg/4.2 m
◎ BOOM	
Boom type	Hyd. Telescopic type
Boom relief rate	4.7 ° sec 이하
◎ Clamp	
Winding speed clamp	10 m / min or more
◎ SWING	
The angle of rotation	330 °
Rotation Speed	9 ° sec 이하
Rotation type	유압모터구동

※ The specifications of the product to improve performance and quality improvement of the design are subject to change without notice and may vary slightly between products and are subject to.

2. Scope of work

Work clamp



Clamp work scope